

Sustainability Report 可持續發展報告 2014  
Executive Summary 行政摘要

Building a  
Sustainable  
Community

持續·建構  
新世界



# Message From Management

## 管理層的話

“Our approach to corporate sustainability continues to underpin the Group’s various initiatives, that is, while pursuing returns (Profit) from our wide range of businesses, we are keen to support the development of different stakeholders in our community (People) and our environment (Planet) to make the world a better place for everyone.”

「我們將企業可持續發展融入日常運作，於盈利、人文和環境之間取得平衡。我們在拓展多元化業務之同時，亦大力支持社區各持份者的發展，並積極推動環境保育，使世界變得更美好。」



**Adrian Cheng**  
**鄭志剛**

*Executive Director and Joint General Manager*  
*Chairperson of New World Group Sustainability Steering Committee*  
執行董事兼聯席總經理  
新世界集團可持續發展督導委員會主席

## New World Group's Sustainability Policy

### 新世界集團可持續發展政策

#### Our Belief 我們的信念

In order to achieve long-term sustainable growth, New World Group is committed to minimizing the potential environmental impacts and improving the quality of the communities where we operate while providing a reasonable return to our investors at the same time.

要達至長遠可持續增長，新世界集團銳意對環境可能造成之影響減至最低及改善所在社區的生活質素，亦同時為我們的投資者提供合理回報。

#### We Strive to 我們致力

- ▶ exceed statutory requirements in relation to sustainability issues;  
超越可持續發展相關法例的要求；
- ▶ engage our stakeholders and develop mutual communication on our sustainability performances;  
在可持續發展表現上與持份者建立雙向的溝通；
- ▶ minimise the potential environmental impacts of our projects as far as practicable;  
在可行情況下，將項目對環境可能造成之影響減至最低；
- ▶ enhance the quality of life for the communities where we operate;  
提升所在社區的生活質素；
- ▶ provide a safe working environment for our employees and inspire them to grow with the Group;  
提供一個安全的工作環境給員工及激勵他們與集團一起成長；
- ▶ influence our supply chain to share our belief with regard to corporate sustainability; and  
影響我們的供應鏈，使他們分享我們對企業可持續發展的信念；
- ▶ continuously improve our sustainability performance through monitoring and reporting.  
透過監測及匯報，不斷改善我們在可持續發展上的表現。

# About the Sustainability Report

## Report

## 關於可持續發展報告

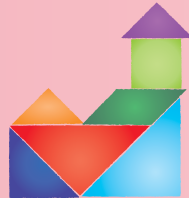
New World Development Company Limited ("New World Group" or the "Group"; Stock Code: 17.HK) recognises the importance of transparency as a key factor of corporate sustainability. This is the second standalone sustainability report which discloses programmes, initiatives and data associated with the Group's corporate sustainability performance. The report highlights our sustainability performances between 1 July 2013 and 30 June 2014. The sustainability report was prepared in accordance with the Core requirements of Global Reporting Initiative (GRI) G4 Guidelines and made reference to the Environmental, Social and Governance Reporting Guide (the ESG Guide) issued by Hong Kong Exchanges and Clearing Limited. An independent verification of the content was conducted by the Hong Kong Productivity Council (HKPC) and confirmed that the materiality, credibility and reliability have complied with the GRI G4 Core requirements.

新世界發展有限公司（「新世界集團」或「集團」；股份代號：17.HK）明白透明度為企業可持續發展的其中一項重要因素，特此呈獻集團第二份獨立的可持續發展報告。報告披露了關於集團可持續發展表現的項目及數據，以及重點陳述我們由 2013 年 7 月 1 日至 2014 年 6 月 30 日期間於可持續發展方面的表現概況。報告依照《全球報告倡議組織 G4 指引》的「核心要求」編寫以及參考了香港聯合交易所有限公司有關《環境、社會及管治報告指引》。而報告內容亦已經由香港生產力促進局獨立核實實質性、公信力及可靠性，確保達到《全球報告倡議組織 G4 指引》的「核心要求」。



# Our Business

## 業務概況



Founded in 1970, New World Development Company Limited was publicly listed in Hong Kong in 1972 and is a constituent stock of the Hong Kong Hang Seng Index.

新世界發展有限公司於 1970 年成立，並於 1972 年在香港上市，為香港恒生指數成份股之一。

## Corporate Structure 集團架構



As at 30 June 2014 截至 2014 年 6 月 30 日

## Core Businesses 核心業務

New World Group is a diversified holding company with a focus on property development, other core businesses include infrastructure and service, department stores and hotels. The Group's businesses have a large geographical coverage, spanning from Hong Kong to Mainland China and numerous international cities.

集團是以地產發展為主的多元化控股公司，其它核心業務包括基建與服務、百貨及酒店，業務遍佈香港、中國內地及世界各地。



# Our Community 我們的社區



## New World Springboard Sustainable Community Programme 「飛躍新世界」可持續社區計劃

New World Springboard was launched in 2012 and is entering its third year. Funded by the New World Group Charity Foundation, the sustainable community programme provides under-resourced youth between the ages of seven and 12 with up to seven years of professional swimming or basketball training. These programmes aim to help students unleash their potential, build self-confidence, foster perseverance and embrace life's challenges with a positive attitude.

Through the sustainable community programme, the Group wishes to assist under-resourced youth to improve social mobility and tackle intergenerational poverty. It is also the Group's objective to build a more harmonious and inclusive community and nurture human capital for the betterment of society.

集團自 2012 年起開展「飛躍新世界」可持續社區計劃，並已邁向第三年。計劃由新世界集團慈善基金贊助，栽培資源缺乏的年輕社群，為 7 至 12 歲的學童提供長達七年的專業游泳或籃球培訓，讓年輕人發揮個人潛能，建立自信並培育他們不屈不撓的精神，為他們的生命注入正能量迎接人生挑戰。

集團期望通過計劃改善社會流動，協助基層兒童和青少年走出跨代貧困，建設更美好的社區之餘亦為社會培育人力資本，從而貢獻社會。



Provide **7** years professional swimming and basketball training to approximately **400** under-resourced youth at **6** districts  
為約 **400** 名來自 **6** 個社區缺乏資源的青少年提供 **7** 年的專業游泳或籃球培訓

Cumulative Training Hours  
累積訓練時數

**>52,000**  
hours 小時

**>18,000**  
hours 小時



# K11 ART FOUNDATION

Being a Hong Kong registered charitable institution, K11 Art Foundation (KAF) aspires to become a sustainable incubation force in the global ecosystem of art, and to create strong public desire for the local contemporary art scene.

作為一個香港註冊的慈善機構，K11 Art Foundation (KAF) 銳意成為全球藝術生態圈中的一個可持續的培植力量，增進大眾對本地當代藝術的興趣。

KAF serves as a springboard for young emerging artists from Greater China where new artistic talents are nurtured and their creative ideas and contribution to humanity globally manifested. Through KAF's innovative education programmes such as artist talks, seminars, workshops and exhibitions across Greater China, as well as a unique contemporary art collection, KAF provides the public easy access to appreciate art and thereby elevate our collective understanding of culture.

KAF is to offer a creative platform to talented young artists from Asia which provides them with opportunities to showcase their full potential and reach a larger audience via initiatives such as the Artist-in-Residence Programme and cross-regional experimentations such as the Artist Exchange Programme. Through facilitating a diverse array of art exhibitions, workshops and seminars, KAF strives to strengthen the public's art awareness and appreciation in order to enrich the city's art scene and enable it to become a leading multi-cultural art hub.

KAF 作為大中華區年輕新銳藝術家的培植跳板，我們致力培育創意新秀，為他們持續提供支持，使他們的創意及貢獻得到廣泛關注。通過 KAF 遍佈大中華的教育項目，包括藝術家講座、研討會、工作坊及展覽，以及獨特的現代藝術收藏，KAF 為大眾提供欣賞藝術及了解文化的捷徑，進而以提高各地區的集體文化意識。

KAF 以跨區域的合作和實驗項目搭建創意平台，透過藝術家駐村計劃及跨地區的藝術家交流計劃等，促進各地藝術家的發展和交流。另通過各類型的藝術展覽、工作坊及研討會，KAF 作為周邊地區領先的多元文化藝術中心，為公眾提供豐富的本土藝術生態。

## Global Special Events 國際特色項目



▶ The China Symposium@The Armory Show  
中國藝術論壇 @ 紐約軍械庫藝術



▶ Space Painting by Zhang Enli  
@Art Basel Hong Kong  
張恩利：空間繪畫 @ 香港巴塞爾藝術展



▶ Master of Impressionism - Claude Monet@K11 Shanghai  
印象派大師·莫奈特展 @ 上海 K11

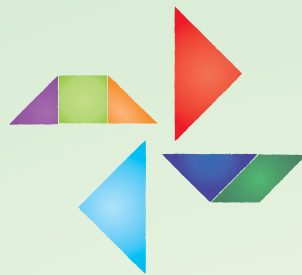


▶ Ink Art: Past as Present in Contemporary China @The Metropolitan Museum of Art (The MET)  
Ink Art: Past as Present in Contemporary China@ 大都會藝術博物館



▶ Social Sculpture: Beuys in China@Art Museum, China Central Academy of Fine Arts  
社會雕塑：博伊斯在中國 @ 中央美術學院美術館

# Our Environment 我們的環境

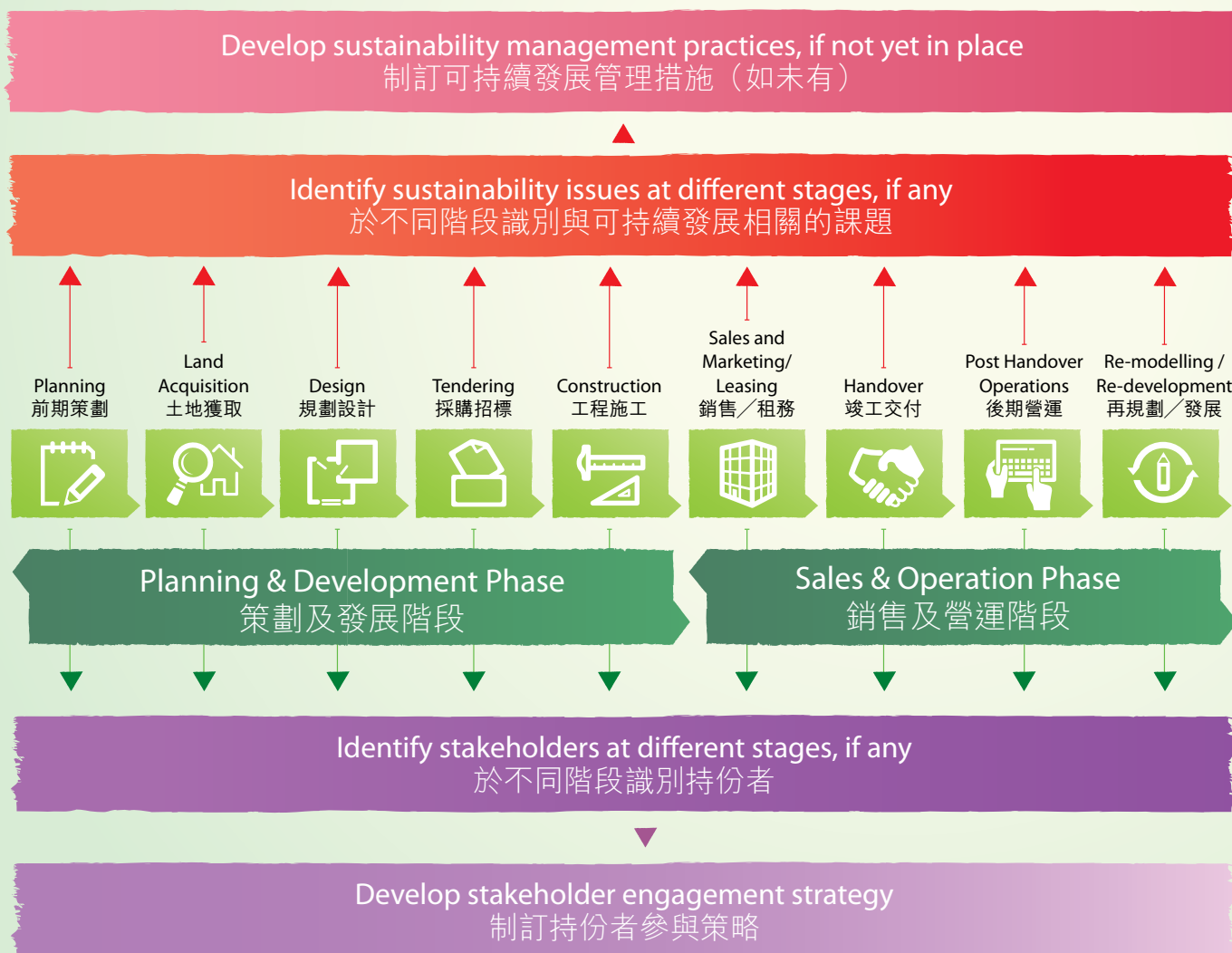


## Life Cycle Approach to Sustainable Property Development

### 可持續物業發展的生命週期

As property development is one of its core businesses, New World Group strives to be a community builder and is committed to minimising the potential environmental impacts of its projects as far as practicable. A life cycle approach model for sustainable property development is developed to enhance understanding of sustainable issues throughout the development process and facilitate communication by various internal and external stakeholders from a holistic perspective. With a focus on environmental issues, the model also addresses community and staff issues.

物業發展為新世界集團其中一項主要業務，是以集團一直致力擔當建設社區的角色並在可行情況下，將項目對環境可能造成之影響減至最低。為提高對可持續發展的認知及以整體的角度與內外持份者保持溝通，集團制訂了一個可持續物業發展生命週期模式。雖然其重點放於環境議題上，此模式亦同時覆蓋社會及員工議題。



In addition to delivering quality properties as its prime objective, New World Group also recognises the importance of the environmental sustainability of its products. The Group is committed to achieving BEAM Plus or LEED certification rating for all its new projects in Hong Kong as far as practicable. For development projects in Hong Kong, 87% (as of June 2014) of the total gross floor area has applied for green building certification (BEAM or BEAM Plus), which is a significant improvement from 62% in 2010.

為客戶提供優質的物業故然為集團的優先目標，然而集團同樣重視產品於環境可持續發展方面的表現。綠色建築認證為項目於環保方面的表現提供一套準則。新世界集團承諾於可行的情況下為其於香港發展的新項目獲取 BEAM Plus 或 LEED 認證。而集團於香港發展項目總樓面面積已申請綠色建築認證的比率，更由 2010 年的 62% 大幅提升至 2014 年 6 月的 87%。

% of total gross floor area applied for green building certification  
總樓面面積已申請  
綠色建築認證之百分比

**87% (2014)**  
**62% (2010)**



Key environmental issues related to the operations of residential, commercial and retail properties in Hong Kong are mainly associated with energy and waste management. A number of energy and waste reduction initiatives have been implemented at our K11 Art Mall, which resulted in carbon emissions reduction of approximately 20% in FY 2013/2014 compared to FY 2010/2011.

在香港，住宅物業、商業樓宇及零售物業面對的環保問題主要與能源及廢物管理有關。集團旗下的 K11 購物藝術館一直致力於減低能源消耗及減廢，與 2010/2011 相比，成功將 2013/2014 年度的碳排放量減低約 20%。

**20%**

Carbon reduction  
at K11 Art Mall  
K11 購物藝術館  
減碳成效



## Our People 我們的員工



New World Group fulfils its family-friendly commitment and promotes a caring culture. This caring spirit has been extended to employees' relatives, with a number of family-friendly measures launched in 2014 to encourage staff to maintain a work-life balance including Family Care leave, flexible working hours and education sponsorship scheme for employees' children.

The Group places great emphasis on staff wellbeing and development, with a New World University scheme that offers long-term and continuous trainings to develop employees at different stages of their careers from executive development programme for senior management to management trainee programme for fresh graduate.

新世界集團一直致力實踐家庭友善之使命，並宣揚集團的關愛文化。2014 年，我們繼續推行多項家庭友善措施，鼓勵員工平衡工作與家庭生活，將集團對員工的關愛，延伸至員工的家人。當中包括關愛家庭假、彈性上班時間及教育資助計劃。

除了重視員工感受，時刻體貼員工需要以外，我們亦積極培育人才，透過名為「新世界大學」的培訓計劃，提供長遠而持續的員工培訓，包括為高級管理人員之行政管理課程至為畢業生而設見習行政人員培訓計劃。



For more information, please download the full sustainability report from New World Development Company Limited's corporate website [www.nwd.com.hk](http://www.nwd.com.hk) or dedicated sustainability website [sr.nwd.com.hk](http://sr.nwd.com.hk).

如欲獲取更多資訊，請於新世界發展有限公司網站 [www.nwd.com.hk](http://www.nwd.com.hk) 或於特設可持續發展網站 [sr.nwd.com.hk](http://sr.nwd.com.hk) 下載可持續發展報告。

We treasure your views on our sustainability performance, please send your feedback on this report and other sustainability related enquiries to [sustainability@nwd.com.hk](mailto:sustainability@nwd.com.hk)

我們重視您對我們於可持續發展表現上的意見，請將您對本報告之回應及其它可持續發展相關查詢電郵至 [sustainability@nwd.com.hk](mailto:sustainability@nwd.com.hk)



[sr.nwd.com.hk](http://sr.nwd.com.hk)

## **New World Development Company Limited** **新世界發展有限公司**

30/F, New World Tower 1, 18 Queen's Road Central, Hong Kong  
香港中環皇后大道中18號新世界大廈一期30樓  
T 電話 : (852) 2523 1056 F 傳真 : (852) 2810 4673  
[www.nwd.com.hk](http://www.nwd.com.hk)

